

# Peripheral Blood

**Peripheral Blood** cells are collected from normal human volunteers by direct collection or by using the COBE® Spectra Apheresis System MNC collection protocol where cell-rich leukapheresis product is extracted using continuous flow centrifugal technology directly into the collection bag.

## Collection

- Collection in HemaCare's FDA-registered collection center in a cGMP/cGTP environment.
- Healthy human volunteer donors for research products are screened for HIV, Hepatitis B Virus (HBV), and Hepatitis C Virus (HCV).
- Donors review and sign an institutional review board (IRB) approved procedure-specific consent form prior to the collection.

## Ordering and Shipping

	Fresh	Cryopreserved
<b>Lead Time</b>	1 week	1-2 business days
<b>Shipping Conditions</b>	Leukopak: Room Temp. Whole Blood: Room Temp. Plasma/Serum: Room Temp. Platelets: Room Temp. Isolated Cells: Wet Ice	Dry Ice or LN2 shipper

HemaCare can ship per your requested specifications.

## Place an Order

- +91 80 65304079
- sales@proteogen.co.in
- +91 80 28385299
- www.proteogen.co.in

## Technical Support

- sreenivasan@proteogen.co.in

## Connect With Us

- ProteoGen Bio S.r.l.
- ProteoGen BioSciences

Catalog #	Product Description	Average Size	Format
PB001C-1	Leukopak - Full Collection	1 Bag	Cryopreserved
PB001C-2	Leukopak - Half Collection	½ Bag	Cryopreserved
PB001C-3	Leukopak - Quarter Collection	¼ Bag	Cryopreserved
PB001F-1	Leukopak - Full Collection	1 Bag	Fresh
PB001F-2	Leukopak - Half Collection	½ Bag	Fresh
PB001F-3	Leukopak - Quarter Collection	¼ Bag	Fresh
PB001	Leukopak	Custom	Custom
PB000F-1	Whole Blood	450 mL	Fresh
PB000F-2	Whole Blood - Specimen Tube	Up to 10 mLs	Fresh
PB000F-3	Whole Blood	100 mLs	Fresh
PB000	Whole Blood	Custom	Custom
PB006C-1	Leukapheresis-derived Plasma - Cryo Vial	2 mL	Cryopreserved
PB006C-2	Leukapheresis-derived Plasma - Cryo Vial	5 mL	Cryopreserved
<i>Cryopreserved vials of plasma are collected in ACD-A. Matched pairs with isolated cells listed below are in inventory. Inquire for availability.</i>			
PB006F-1	Plasma - Specimen Tube	Up to 10 mLs	Fresh
PB006	Plasma	Custom	Custom
PB007C-1	Serum (from inventory only)	2 mL	Cryopreserved
PB007C-2	Serum (from inventory only)	5 mL	Cryopreserved
PB007F-1	Serum - 8.5 mL SST Tube	Up to 8.5 mLs	Fresh
PB007	Serum	Custom	Custom
PB002F-1	Platelets; Single Donor	300 x 10 <sup>9</sup> platelets	Fresh

more on reverse side



**HemaCare**  
BioResearch Products & Services  
Your Research • Our Cells • Your Way

# Peripheral Blood

Catalog #	Product Description	Average Size	Format
PB009C-1	Mononuclear Cells	10 x 10 <sup>6</sup> cells	Cryopreserved
PB009C-2	Mononuclear Cells	25 x 10 <sup>6</sup> cells	Cryopreserved
PB009C-50	Mononuclear Cells	50 x 10 <sup>6</sup> cells	Cryopreserved
PB009C-3	Mononuclear Cells	100 x 10 <sup>6</sup> cells	Cryopreserved
PB009F-3	Mononuclear Cells	250 x 10 <sup>6</sup> cells	Fresh
PB009F-4	Mononuclear Cells	500 x 10 <sup>6</sup> cells	Fresh
PB009	Mononuclear Cells	Custom	Custom
PB03C-1	CD3 <sup>+</sup> Pan T Cells	5 x 10 <sup>6</sup> cells	Cryopreserved
PB03C-2	CD3 <sup>+</sup> Pan T Cells	10 x 10 <sup>6</sup> cells	Cryopreserved
PB03C-3	CD3 <sup>+</sup> Pan T Cells	25 x 10 <sup>6</sup> cells	Cryopreserved
PB03C-4	CD3 <sup>+</sup> Pan T Cells	50 x 10 <sup>6</sup> cells	Cryopreserved
PB03NC-1	CD3 <sup>+</sup> Pan T Cells, Negative Selection	5 x 10 <sup>6</sup> cells	Cryopreserved
PB03NC-2	CD3 <sup>+</sup> Pan T Cells, Negative Selection	10 x 10 <sup>6</sup> cells	Cryopreserved
PB03NC-3	CD3 <sup>+</sup> Pan T Cells, Negative Selection	25 x 10 <sup>6</sup> cells	Cryopreserved
PB03	CD3 <sup>+</sup> Pan T Cells	Custom	Custom
PB03-TCRG/D-1	CD3 <sup>+</sup> Gamma/Delta T Cells	Custom	Custom
PB04C-1	CD4 <sup>+</sup> Helper T Cells	10 x 10 <sup>6</sup> cells	Cryopreserved
PB04C-2	CD4 <sup>+</sup> Helper T Cells	25 x 10 <sup>6</sup> cells	Cryopreserved
PB04F-1	CD4 <sup>+</sup> Helper T Cells	10 x 10 <sup>6</sup> cells	Fresh
PB04NC-1	CD4 <sup>+</sup> Helper T Cells, Negative Selection	10 x 10 <sup>6</sup> cells	Cryopreserved
PB04	CD4 <sup>+</sup> Helper T Cells	Custom	Custom
PB0445RAC-1	Naïve CD4 Helper T Cells	5 x 10 <sup>6</sup> cells	Cryopreserved
PB0445RA	Naïve CD4 Helper T Cells	Custom	Custom
PB08NC-1	CD8 <sup>+</sup> Cytotoxic T Cells, Negative Selection	5 x 10 <sup>6</sup> cells	Cryopreserved
PB08NC-2	CD8 <sup>+</sup> Cytotoxic T Cells, Negative Selection	10 x 10 <sup>6</sup> cells	Cryopreserved
PB08NC-3	CD8 <sup>+</sup> Cytotoxic T Cells, Negative Selection	25 x 10 <sup>6</sup> cells	Cryopreserved
PB08	CD8 <sup>+</sup> Cytotoxic T Cells	Custom	Custom
PB14C-1	CD14 <sup>+</sup> Monocytes	10 x 10 <sup>6</sup> cells	Cryopreserved
PB14C-2	CD14 <sup>+</sup> Monocytes	25 x 10 <sup>6</sup> cells	Cryopreserved
PB14C-3	CD14 <sup>+</sup> Monocytes	50 x 10 <sup>6</sup> cells	Cryopreserved
PB14F-1	CD14 <sup>+</sup> Monocytes	10 x 10 <sup>6</sup> cells	Fresh
PB14F-2	CD14 <sup>+</sup> Monocytes	25 x 10 <sup>6</sup> cells	Fresh
PB14F-3	CD14 <sup>+</sup> Monocytes	50 x 10 <sup>6</sup> cells	Fresh
PB14NC-1	CD14 <sup>+</sup> Monocytes, Negative Selection	10 x 10 <sup>6</sup> cells	Cryopreserved
PB14NC-2	CD14 <sup>+</sup> Monocytes, Negative Selection	25 x 10 <sup>6</sup> cells	Cryopreserved
PB14NC-3	CD14 <sup>+</sup> Monocytes, Negative Selection	50 x 10 <sup>6</sup> cells	Cryopreserved
PB14	CD14 <sup>+</sup> Monocytes	Custom	Custom
PB19C-1	CD19 <sup>+</sup> B Cells	5 x 10 <sup>6</sup> cells	Cryopreserved
PB19C-2	CD19 <sup>+</sup> B Cells	10 x 10 <sup>6</sup> cells	Cryopreserved
PB19C-3	CD19 <sup>+</sup> B Cells	25 x 10 <sup>6</sup> cells	Cryopreserved
PB19NC-1	CD19 <sup>+</sup> B Cells, Negative Selection	10 x 10 <sup>6</sup> cells	Cryopreserved
PB19	CD19 <sup>+</sup> B Cells	Custom	Custom
PB425C-1	CD4 <sup>+</sup> /CD25 <sup>+</sup> Regulatory T Cells	2 x 10 <sup>6</sup> cells	Cryopreserved
PB425F-1	CD4 <sup>+</sup> /CD25 <sup>+</sup> Regulatory T Cells	2 x 10 <sup>6</sup> cells	Fresh
PB425	CD4 <sup>+</sup> /CD25 <sup>+</sup> Regulatory T Cells	Custom	Custom
PB425/127NC-1	CD4 <sup>+</sup> /CD25 <sup>+</sup> /CD127 <sup>-</sup> Regulatory T Cells	2 x 10 <sup>6</sup> cells	Cryopreserved
PB425/127NC-2	CD4 <sup>+</sup> /CD25 <sup>+</sup> /CD127 <sup>-</sup> Regulatory T Cells	5 x 10 <sup>6</sup> cells	Cryopreserved
PB425/127N	CD4 <sup>+</sup> /CD25 <sup>+</sup> /CD127 <sup>-</sup> Regulatory T Cells	Custom	Custom
PB56NC-1	CD56 <sup>+</sup> NK Cells, Negative Selection	5 x 10 <sup>6</sup> cells	Cryopreserved
PB56NC-2	CD56 <sup>+</sup> NK Cells, Negative Selection	10 x 10 <sup>6</sup> cells	Cryopreserved
PB56	CD56 <sup>+</sup> NK Cells	Custom	Custom
PB010C-1	Dendritic Cells	2 x 10 <sup>6</sup> cells	Cryopreserved
PB010	Dendritic Cells	Custom	Custom
PB011C-1	Neutrophils	10 x 10 <sup>6</sup> cells	Cryopreserved
PB011C-2	Neutrophils	25 x 10 <sup>6</sup> cells	Cryopreserved
PB011	Neutrophils	Custom	Custom
PB____C-MON-1	[M1, M2, Mixed] Macrophages (Monocyte Derived)	2 x 10 <sup>6</sup> cells	Cryopreserved
PB____C-MON-2	[M1, M2, Mixed] Macrophages (Monocyte Derived)	5 x 10 <sup>6</sup> cells	Cryopreserved
PB____C-MON-3	[M1, M2, Mixed] Macrophages (Monocyte Derived)	10 x 10 <sup>6</sup> cells	Cryopreserved
PB____F-MON-1	[M1, M2, Mixed] Macrophages (Monocyte Derived)	2 x 10 <sup>6</sup> cells	Fresh
PB____F-MON-2	[M1, M2, Mixed] Macrophages (Monocyte Derived)	5 x 10 <sup>6</sup> cells	Fresh
PB____F-MON-3	[M1, M2, Mixed] Macrophages (Monocyte Derived)	10 x 10 <sup>6</sup> cells	Fresh
PB____-MON	[M1, M2, Mixed] Macrophages (Monocyte Derived)	Custom	Custom

M1 = M1 Macrophage; M2 = M2 Macrophage; MAC = Mixed Macrophage

Don't see a specific product needed for your research?

Contact us as we have the ability to customize collections and processing.



**HemaCare**  
BioResearch Products & Services  
Your Research • Our Cells • Your Way

# Mobilized Peripheral Blood

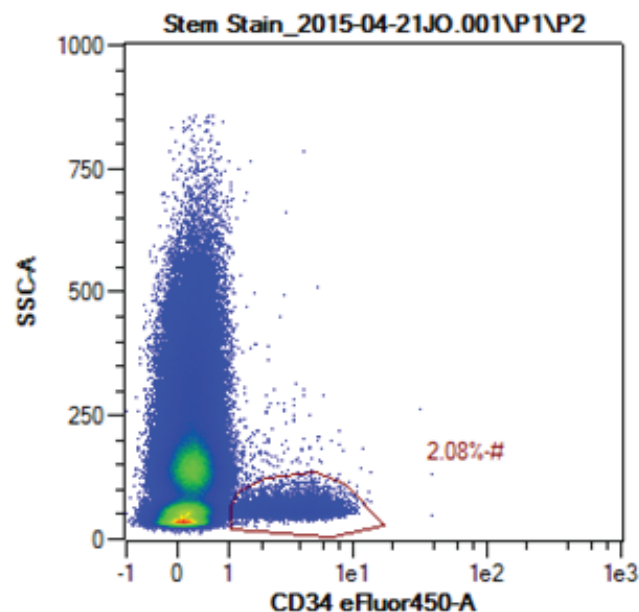
**Mobilized Peripheral Blood** cells are collected from healthy human volunteers using the COBE® Spectra Apheresis System MNC collection protocol. Donors are injected with Mozobil, G-CSF (Neupogen®) or a combination of Mozobil and G-CSF, which stimulates the bone marrow to produce a large number of hematopoietic and progenitor stem cells and mobilizes them into the peripheral blood stream. This mononuclear cell-rich leukapheresis product is extracted using continuous flow centrifugal technology directly into the collection bag.

## HemaCare Preferred for Mobilized

- Highly characterized donor pool
- FDA registered collection centers and strict adherence to validated protocols
- Rigorous operational controls and quality systems for cell processing and preservation

## Collection

- Collection in HemaCare's FDA-registered collection center in a cGMP/cGTP environment.
- Healthy human volunteer donors for research products are screened for HIV, Hepatitis B Virus (HBV), and Hepatitis C Virus (HCV).
- Donors review and sign an institutional review board (IRB) approved procedure-specific consent form prior to the collection.



Percent of CD34 stem cells in a represented mobilized leukopak.

## Ordering and Shipping

	Fresh	Cryopreserved
<b>Lead Time</b>	4 weeks	1-2 business days
<b>Shipping Conditions</b>	Leukopak: Room Temp. Isolated Cells: Wet Ice	Dry Ice or LN2 shipper

HemaCare can ship per your requested specifications.

### Place an Order

- +91 80 65304079
- sales@proteogen.co.in
- +91 80 28385299
- www.proteogen.co.in

### Technical Support

- sreenivasan@proteogen.co.in

### Connect With Us

- ProteoGen Bio S.r.l.
- ProteoGen BioSciences



# Mobilized Peripheral Blood

Catalog #	Product Description	Average Size	Format
M001F-MOZ-1	Mobilized PB Leukopak; Mozobil Only	1 Bag	Fresh
M001F-GCSF/MOZ-1	Mobilized PB Leukopak; G-CSF and Mozobil	1 Bag (Day 6)	Fresh
M001F-GCSF/MOZ-2	Mobilized PB Leukopak; G-CSF and Mozobil	2 Bags (Day 5 and 6)	Fresh
M001F-GCSF-1	Mobilized PB Leukopak; G-CSF - 3 Day Stim	1 Bag	Fresh
M001F-GCSF-2	Mobilized PB Leukopak; G-CSF - 4 Day Stim	1 Bag	Fresh
M001F-GCSF-3	Mobilized PB Leukopak; G-CSF - 5 Day Stim	1 Bag	Fresh
M001F-GCSF-4	Mobilized PB Leukopak; G-CSF - 5 Day Stim	2 Bags (Day 5 and 6)	Fresh
M001	Mobilized PB Leukopak	Custom	Custom
M009C-1	Mononuclear Cells	50 x 10 <sup>6</sup> cells	Cryopreserved
M009C-2	Mononuclear Cells	100 x 10 <sup>6</sup> cells	Cryopreserved
M009C-3	Mononuclear Cells	250 x 10 <sup>6</sup> cells	Cryopreserved
M009F-1	Mononuclear Cells	100 x 10 <sup>6</sup> cells	Fresh
M009F-2	Mononuclear Cells	250 x 10 <sup>6</sup> cells	Fresh
M009F-3	Mononuclear Cells	500 x 10 <sup>6</sup> cells	Fresh
M009	Mononuclear Cells	Custom	Custom
M34DC-1	CD34 Depleted Mononuclear Cells	25 x 10 <sup>6</sup> cells	Cryopreserved
M34D	CD34 Depleted Mononuclear Cells	Custom	Custom
M34C-1	CD34 <sup>+</sup> Stem/Progenitor Cells	1 x 10 <sup>6</sup> cells	Cryopreserved
M34C-2	CD34 <sup>+</sup> Stem/Progenitor Cells	5 x 10 <sup>6</sup> cells	Cryopreserved
M34C-3	CD34 <sup>+</sup> Stem/Progenitor Cells	10 x 10 <sup>6</sup> cells	Cryopreserved
M34C-4	CD34 <sup>+</sup> Stem/Progenitor Cells	25 x 10 <sup>6</sup> cells	Cryopreserved
M34F-1	CD34 <sup>+</sup> Stem/Progenitor Cells	1 x 10 <sup>6</sup> cells	Fresh
M34F-2	CD34 <sup>+</sup> Stem/Progenitor Cells	5 x 10 <sup>6</sup> cells	Fresh
M34F-3	CD34 <sup>+</sup> Stem/Progenitor Cells	10 x 10 <sup>6</sup> cells	Fresh
M34F-4	CD34 <sup>+</sup> Stem/Progenitor Cells	25 x 10 <sup>6</sup> cells	Fresh
M34F-5	CD34 <sup>+</sup> Stem/Progenitor Cells	50 x 10 <sup>6</sup> cells	Fresh
M34	CD34 <sup>+</sup> Stem/Progenitor Cells	Custom	Custom
M133C-1	CD133 <sup>+</sup> Stem/Progenitor Cells	1 x 10 <sup>6</sup> cells	Cryopreserved
M133C-2	CD133 <sup>+</sup> Stem/Progenitor Cells	2.5 x 10 <sup>6</sup> cells	Cryopreserved
M133C-3	CD133 <sup>+</sup> Stem/Progenitor Cells	5 x 10 <sup>6</sup> cells	Cryopreserved
M133F-1	CD133 <sup>+</sup> Stem/Progenitor Cells	1 x 10 <sup>6</sup> cells	Fresh
M133F-2	CD133 <sup>+</sup> Stem/Progenitor Cells	2.5 x 10 <sup>6</sup> cells	Fresh
M133F-3	CD133 <sup>+</sup> Stem/Progenitor Cells	5 x 10 <sup>6</sup> cells	Fresh
M133	CD133 <sup>+</sup> Stem/Progenitor Cells	Custom	Custom

Please allow a 4- 6 week lead time for FRESH and CUSTOM mobilized products.

Don't see a specific product needed for your research? Contact us as we have the ability to customize collections and processing.



**HemaCare**  
BioResearch Products & Services  
Your Research • Our Cells • Your Way

# Bone Marrow

**Bone Marrow** aspirates and cells are collected from normal human volunteers drawn from the posterior iliac crest using a syringe containing anticoagulant.

## Collection

- Collected by external collection centers that have been qualified by HemaCare's QA Department.
- Healthy human volunteer donors for research products are screened for HIV, Hepatitis B Virus (HBV), and Hepatitis C Virus (HCV).
- Donors review and sign an institutional review board (IRB) approved procedure-specific consent form prior to the collection.

## Ordering and Shipping

	Fresh	Cryopreserved
Lead Time	2 weeks	1-2 business days
Shipping Conditions	Unprocessed: Room Temp. Isolated Cells: Wet Ice	Dry Ice or LN2 shipper

HemaCare can ship per your requested specifications.

## Place an Order

- +91 80 65304079
- sales@proteogen.co.in
- +91 80 28385299
- www.proteogen.co.in

## Technical Support

- sreenivasan@proteogen.co.in

## Connect With Us

- ProteoGen Bio S.r.l.
- ProteoGen BioSciences

Catalog #	Product Description	Average Size	Format
BM008	Unprocessed Bone Marrow	Custom	Custom
BM009C-1	Mononuclear Cells	25 x 10 <sup>6</sup> cells	Cryopreserved
BM009C-2	Mononuclear Cells	100 x 10 <sup>6</sup> cells	Cryopreserved
BM009	Mononuclear Cells	Custom	Custom
BM34D	CD34 Depleted Mononuclear Cells	Custom	Custom
BM012C-1	Mesenchymal Stem Cells (MSC)	1 x 10 <sup>6</sup> cells	Cryopreserved
BM012	Mesenchymal Stem Cells (MSC)	Custom	Custom
BM34C-1	CD34 <sup>+</sup> Stem/Progenitor Cells	1 x 10 <sup>5</sup> cells	Cryopreserved
BM34C-2	CD34 <sup>+</sup> Stem/Progenitor Cells	2.5 x 10 <sup>5</sup> cells	Cryopreserved
BM34C-3	CD34 <sup>+</sup> Stem/Progenitor Cells	5 x 10 <sup>5</sup> cells	Cryopreserved
BM34C-4	CD34 <sup>+</sup> Stem/Progenitor Cells	2 x 10 <sup>6</sup> cells	Cryopreserved
BM34	CD34 <sup>+</sup> Stem/Progenitor Cells	Custom	Custom
BM133C-1	CD133 <sup>+</sup> Stem/Progenitor Cells	1 x 10 <sup>5</sup> cells	Cryopreserved
BM133C-2	CD133 <sup>+</sup> Stem/Progenitor Cells	5 x 10 <sup>5</sup> cells	Cryopreserved
BM133	CD133 <sup>+</sup> Stem/Progenitor Cells	Custom	Custom

Don't see a specific product needed for your research? Contact us as we have the ability to customize collections and processing.



**HemaCare**  
BioResearch Products & Services  
Your Research • Our Cells • Your Way

# Cord Blood

**Cord Blood** is collected aseptically at the time of delivery from healthy pregnant women into a sterile bag containing anticoagulant. HemaCare is able to isolate various cells from cord blood.

## Collection

- Collected by external collection centers that have been qualified by HemaCare's QA Department.
- Healthy human volunteer donors for research products are screened for HIV, Hepatitis B Virus (HBV), and Hepatitis C Virus (HCV).
- Donors review and sign an institutional review board (IRB) approved procedure-specific consent form prior to the collection.

## Ordering and Shipping

	Fresh	Cryopreserved
<b>Lead Time</b>	2 weeks	1-2 business days
<b>Shipping Conditions</b>	Unprocessed: Room Temp. Isolated Cells: Wet Ice	Dry Ice or LN2 shipper

*HemaCare can ship per your requested specifications.*

### Place an Order

- +91 80 65304079
- sales@proteogen.co.in
- +91 80 28385299
- www.proteogen.co.in

### Technical Support

- sreenivasan@proteogen.co.in

### Connect With Us

- ProteoGen Bio S.r.l.
- ProteoGen BioSciences

Catalog #	Product Description	Average Size	Format
CB008F-0	Unprocessed Cord Blood	0.8 - <1 x 10 <sup>9</sup> cells	Fresh
CB008F-1	Unprocessed Cord Blood	>1 x 10 <sup>9</sup> cells	Fresh
CB008	Unprocessed Cord Blood	Custom	Custom
CB71C-1	Nucleated Red Blood Cells (nRBC)	10 x 10 <sup>6</sup> cells	Cryopreserved
CB71C-2	Nucleated Red Blood Cells (nRBC)	25 x 10 <sup>6</sup> cells	Cryopreserved
CB71	Nucleated Red Blood Cells (nRBC)	Custom	Custom
CB006C-1	Plasma	10 mL	Cryopreserved
CB006C-2	Plasma	25 mL	Cryopreserved
CB006C-3	Plasma	50 mL	Cryopreserved
CB006	Plasma	Custom	Custom

more on reverse side



**HemaCare**  
BioResearch Products & Services  
Your Research • Our Cells • Your Way



# Cord Blood

Catalog #	Product Description	Average Size	Format
CB009C-1	Mononuclear Cells	25 x 10 <sup>6</sup> cells	Cryopreserved
CB009C-2	Mononuclear Cells	100 x 10 <sup>6</sup> cells	Cryopreserved
CB009C-3	Mononuclear Cells	200 x 10 <sup>6</sup> cells	Cryopreserved
CB009	Mononuclear Cells	Custom	Custom
CB34DC-1	CD34 Depleted Mononuclear Cells	200 x 10 <sup>6</sup> cells	Cryopreserved
CB34	CD34 Depleted Mononuclear Cells	Custom	Custom
CB133DC-1	CD133 Depleted Mononuclear Cells	200 x 10 <sup>6</sup> cells	Cryopreserved
CB133	CD133 Depleted Mononuclear Cells	Custom	Custom
CB03C-1	CD3 <sup>+</sup> Pan T Cells	10 x 10 <sup>6</sup> cells	Cryopreserved
CB03NC-1	CD3 <sup>+</sup> Pan T Cells, Negative Selection	10 x 10 <sup>6</sup> cells	Cryopreserved
CB03	CD3 <sup>+</sup> Pan T Cells	Custom	Custom
CB04C-1	CD4 <sup>+</sup> Helper T Cells	10 x 10 <sup>6</sup> cells	Cryopreserved
CB04NC-1	CD4 <sup>+</sup> Helper T Cells, Negative Selection	10 x 10 <sup>6</sup> cells	Cryopreserved
CB04	CD4 <sup>+</sup> Helper T Cells	Custom	Custom
CB08C-1	CD8 <sup>+</sup> Cytotoxic T Cells	10 x 10 <sup>6</sup> cells	Cryopreserved
CB08NC-1	CD8 <sup>+</sup> Cytotoxic T Cells, Negative Selection	10 x 10 <sup>6</sup> cells	Cryopreserved
CB08	CD8 <sup>+</sup> Cytotoxic T Cells	Custom	Custom
CB14C-1	CD14 <sup>+</sup> Monocytes	5 x 10 <sup>6</sup> cells	Cryopreserved
CB14C-2	CD14 <sup>+</sup> Monocytes	10 x 10 <sup>6</sup> cells	Cryopreserved
CB14C-3	CD14 <sup>+</sup> Monocytes	25 x 10 <sup>6</sup> cells	Cryopreserved
CB14	CD14 <sup>+</sup> Monocytes	Custom	Custom
CB19C-1	CD19 <sup>+</sup> B Cells	1 x 10 <sup>6</sup> cells	Cryopreserved
CB19C-2	CD19 <sup>+</sup> B Cells	5 x 10 <sup>6</sup> cells	Cryopreserved
CB19	CD19 <sup>+</sup> B Cells	Custom	Custom
CB34C-1	CD34 <sup>+</sup> Stem/Progenitor Cells	1 x 10 <sup>5</sup> cells	Cryopreserved
CB34C-2	CD34 <sup>+</sup> Stem/Progenitor Cells	5 x 10 <sup>5</sup> cells	Cryopreserved
CB34C-3	CD34 <sup>+</sup> Stem/Progenitor Cells	1 x 10 <sup>6</sup> cells	Cryopreserved
CB34	CD34 <sup>+</sup> Stem/Progenitor Cells	Custom	Custom
CB56C-1	CD56 <sup>+</sup> NK Cells	1 x 10 <sup>6</sup> cells	Cryopreserved
CB56	CD56 <sup>+</sup> NK Cells	Custom	Custom
CB133C-1	CD133 <sup>+</sup> Stem/Progenitor Cells	1 x 10 <sup>5</sup> cells	Cryopreserved
CB133C-2	CD133 <sup>+</sup> Stem/Progenitor Cells	5 x 10 <sup>5</sup> cells	Cryopreserved
CB133	CD133 <sup>+</sup> Stem/Progenitor Cells	Custom	Custom
CB011	Neutrophils	Custom	Custom

Don't see a specific product needed for your research? Contact us as we have the ability to customize collections and processing.



# Disease State Primary Cells and Biological Components

HemaCare provides researchers with a wide variety of well-characterized primary cells and biological components through our broad and diverse US-based procurement network for use in basic, clinical, and translational research studies.

## Collection

Our network consists of community hospitals, physician groups, and multi-specialty clinics that have been qualified by HemaCare's QA Department. Because of our strong relationship with these sites, we are able to:

- Provide rapid turn-around time for product procurement
- Offer a broad array of sample types for a variety of patient demographic
- Adhere to the specifications and quality required for specimen acquisition outlined by most research protocols.

## Available Disease State Samples

### Cancer

Acute Myeloid Leukemia [-AML]  
Breast Cancer [-BC]  
Chronic Lymphocytic Leukemia [-CLL]  
Colorectal Cancer [-CRC]  
Gastric Cancer [-GC]  
Lung Cancer [-LC]  
Multiple Myeloma [-MM]  
Non-Hodgkin's Lymphoma [-NHL]  
Prostate Cancer [-PC]

### Infectious Disease

Hepatitis B Virus [-HBV]  
Hepatitis C Virus [-HCV]  
Herpes Simplex Virus 1 [-HSV1]  
Herpes Simplex Virus 2 [-HSV2]  
Human Immunodeficiency Virus [-HIV]  
Syphilis [-SYP]

### Autoimmune Disease

Diabetes Mellitus Type 2 [-DM2]  
Rheumatoid Arthritis [-RA]  
Systemic Lupus Erythematosus [-SLE]

### Inflammatory Bowel Disease

Crohn's Disease [-CD]

*Don't see a disease state needed for your research?  
Contact us as we have the ability to recruit donors to meet  
your needs.*

### Place an Order

+91 80 65304079  
sales@proteogen.co.in  
+91 80 28385299  
www.proteogen.co.in

### Technical Support

sreenivasan@proteogen.co.in

### Connect With Us

ProteoGen Bio S.r.l.  
ProteoGen BioSciences

## Ordering and Shipping

	Fresh	Cryopreserved
Lead Time	4 weeks	1-2 business days
Shipping Conditions	Whole Blood: Room Temp. Plasma/Serum: Room Temp. Isolated Cells: Wet Ice	Dry Ice or LN2 shipper

*HemaCare can ship per your requested specifications.*



**HemaCare**  
BioResearch Products & Services  
Your Research • Our Cells • Your Way



# Disease State Primary Cells and Biological Components

## Peripheral Blood Derived

Catalog #	Product Description	Average Size	Format
PB000-____	Whole Blood	Custom	Custom
PB006C-1-____ PB006-____	Plasma - Specimen Tube Plasma - Specimen Tube	2 mL Custom	Cryopreserved Custom
PB007C-1-____ PB007-____	Serum - Specimen Tube Serum - Specimen Tube	2 mL Custom	Cryopreserved Custom
PB009C-1-____ PB009-____	Mononuclear Cells Mononuclear Cells	10 x 10 <sup>6</sup> cells Custom	Cryopreserved Custom

*Don't see a product needed for your research? Contact us as we have the ability to customize collections and processing.*



**HemaCare**  
BioResearch Products & Services  
Your Research • Our Cells • Your Way

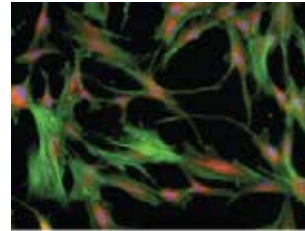
# Preservation Media

Success in the regenerative medicine, biobanking, and drug discovery industries depends on the shelf life and viability of cells, tissues, and organs designated for research or clinical applications. Hand in hand with many of these applications is the need for high quality biologically functional cells. BioLife Solutions and HemaCare have partnered to provide controlled, consistently functional cells and cGMP-grade preservation media products. This media significantly extends stability and improves post-preservation viability and function of your biologic source material, intermediates, and final products.

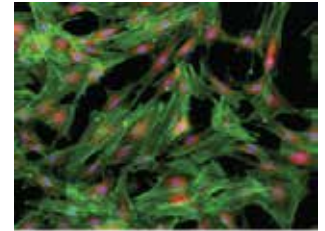


## CryoStor®

Pre-formulated with 2, 5, 10%, or a custom volume of USP-grade DMSO, CryoStor yields superior post-thaw cell viability, recovery, and function. Serum-free and protein-free!



Cryopreserved with serum

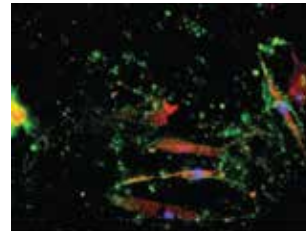


Cryopreserved in serum-free CryoStor

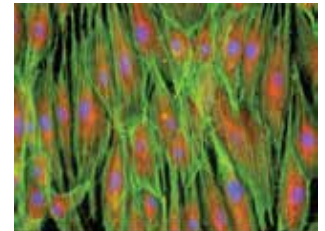


## HypoThermosol®

Protein-free, serum-free hypothermic storage media are designed for maximum shelf life and shipping stability at 2-8°C.



Biopreserved in Hema-Brew Media



Biopreserved in HypoThermosol

Catalog #	Product Description	Average Size
202102	CryoStor CS2 - <i>Preformulated with 2% DMSO</i>	100 mL bottle
205102	CryoStor CS5 - <i>Preformulated with 5% DMSO</i>	100 mL bottle
210102	CryoStor CS10 - <i>Preformulated with 10% DMSO</i>	100 mL bottle
101102	HypoThermosol FRS	100 mL bottle
101104	HypoThermosol FRS	500 mL bottle
101204	HypoThermosol FRS	500 mL IV bag

### Place an Order

- +91 80 65304079
- sales@proteogen.co.in
- +91 80 28385299
- www.proteogen.co.in

### Technical Support

- sreenivasan@proteogen.co.in

### Connect With Us

- ProteoGen Bio S.r.l.
- ProteoGen BioSciences

